

PLAN | PERMIT | DESIGN | CONSTRUCT



WOODBURY AVENUE CORRIDOR STUDY

Dennett Street to Rockingham Avenue

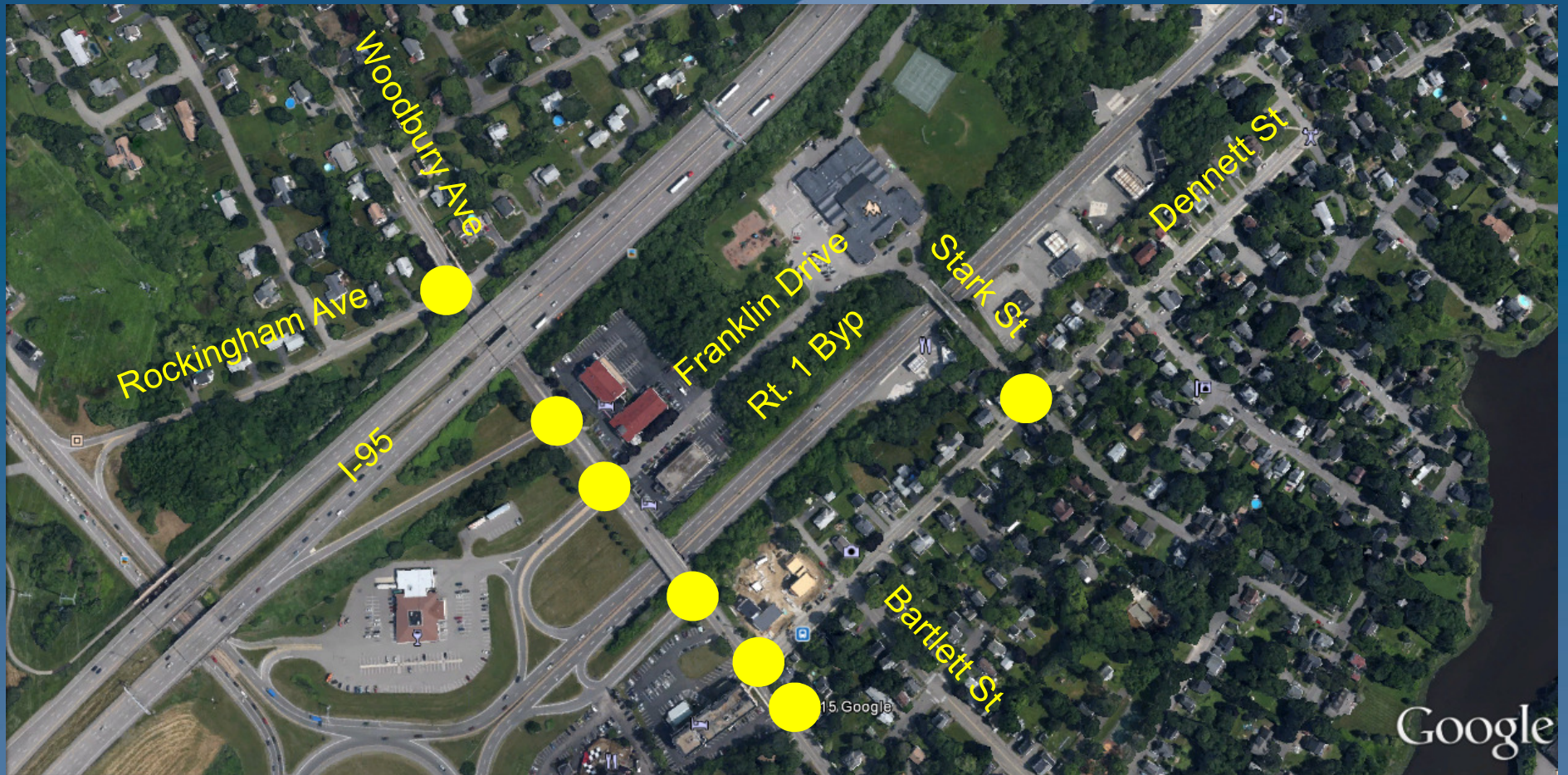


169 Ocean Boulevard
Hampton, NH 03842
www.theengineeringcorp.com



City of Portsmouth, NH
December 3, 2015

Woodbury Ave Study Area



PLAN | PERMIT | DESIGN | CONSTRUCT



Woodbury Ave Existing Challenges

- ✓ Mix of Car, Truck, Bicycle, Pedestrian, and Transit Use
- ✓ New Franklin Elementary School Pick-up / Drop-Off
- ✓ Sign Clutter



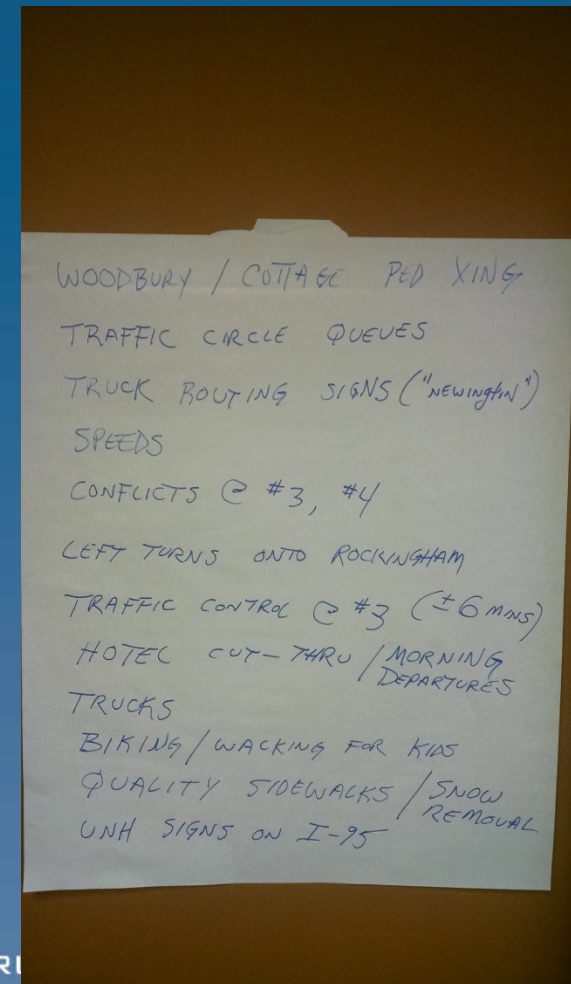
Woodbury Ave Project Goals

- ✓ Increase Vehicular Capacity
- ✓ Upgrade / Repair / Replace Deficient Infrastructure
- ✓ Reduce Driver Confusion & Conflict Points
- ✓ Provide a Complete Streets Design
- ✓ Improve Safety and Mobility for All Users



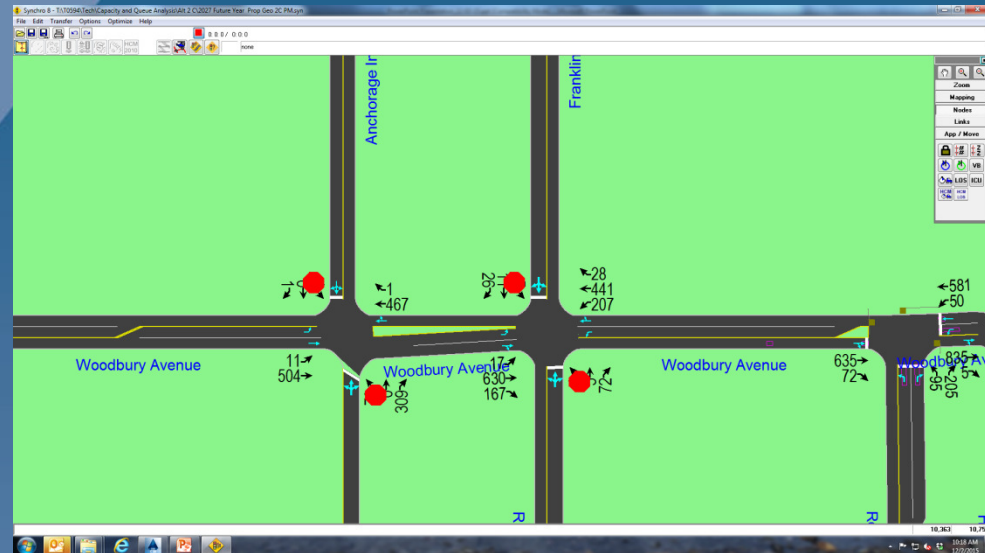
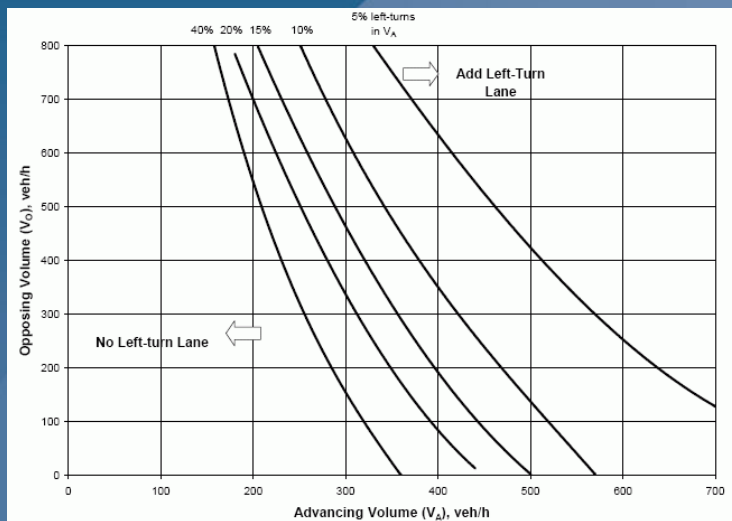
Study Methodology – Data Collection

- ✓ Field Inventory
- ✓ Sight Distance Evaluation
- ✓ Traffic Counts
- ✓ Public Meetings

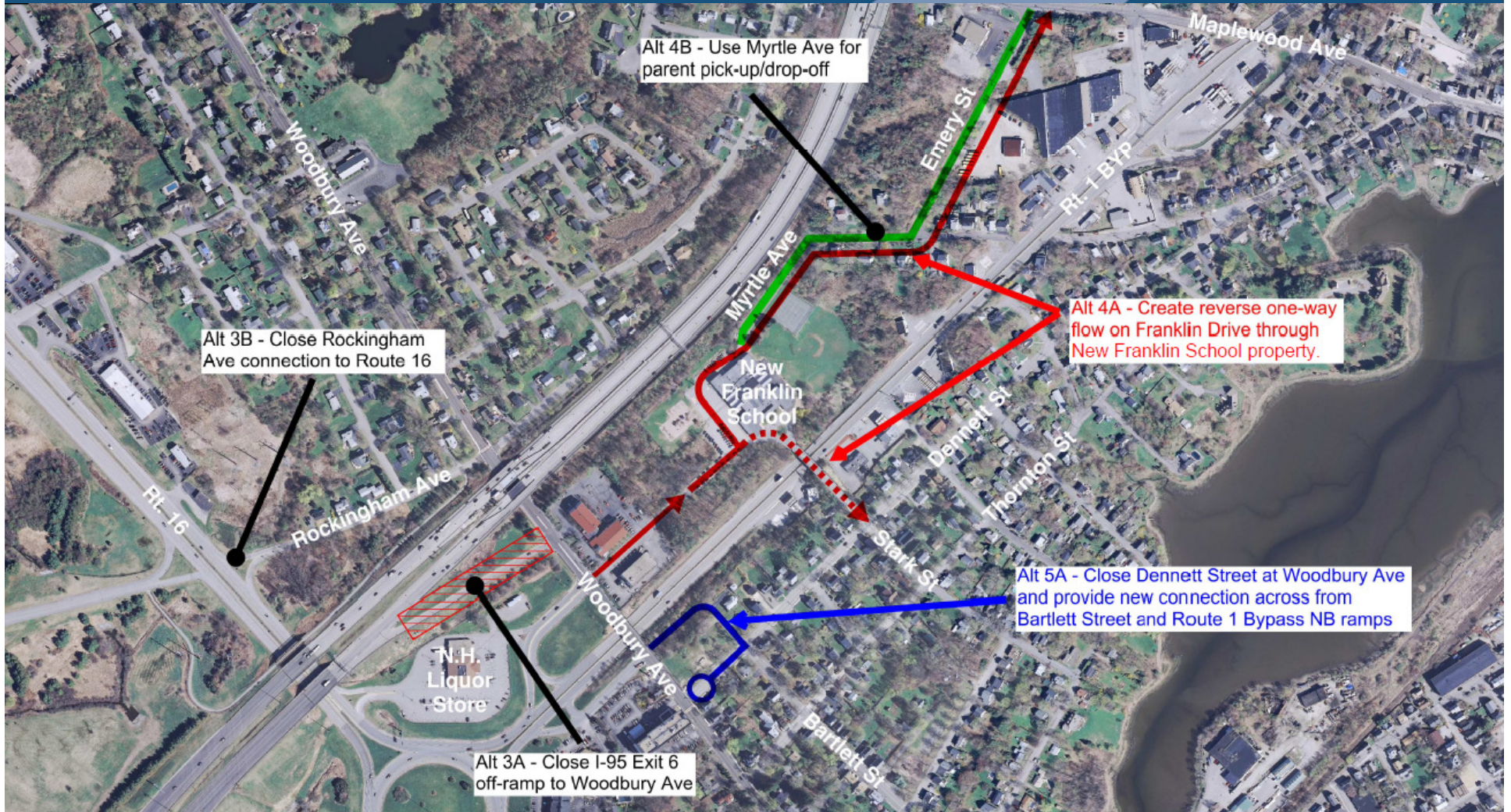


Study Methodology – Analysis

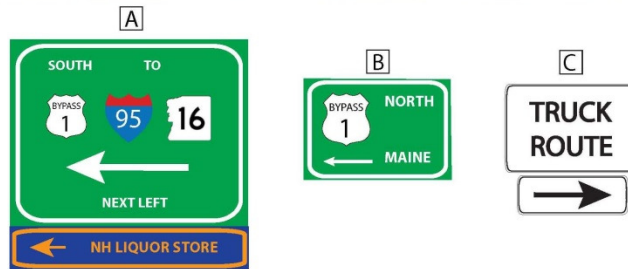
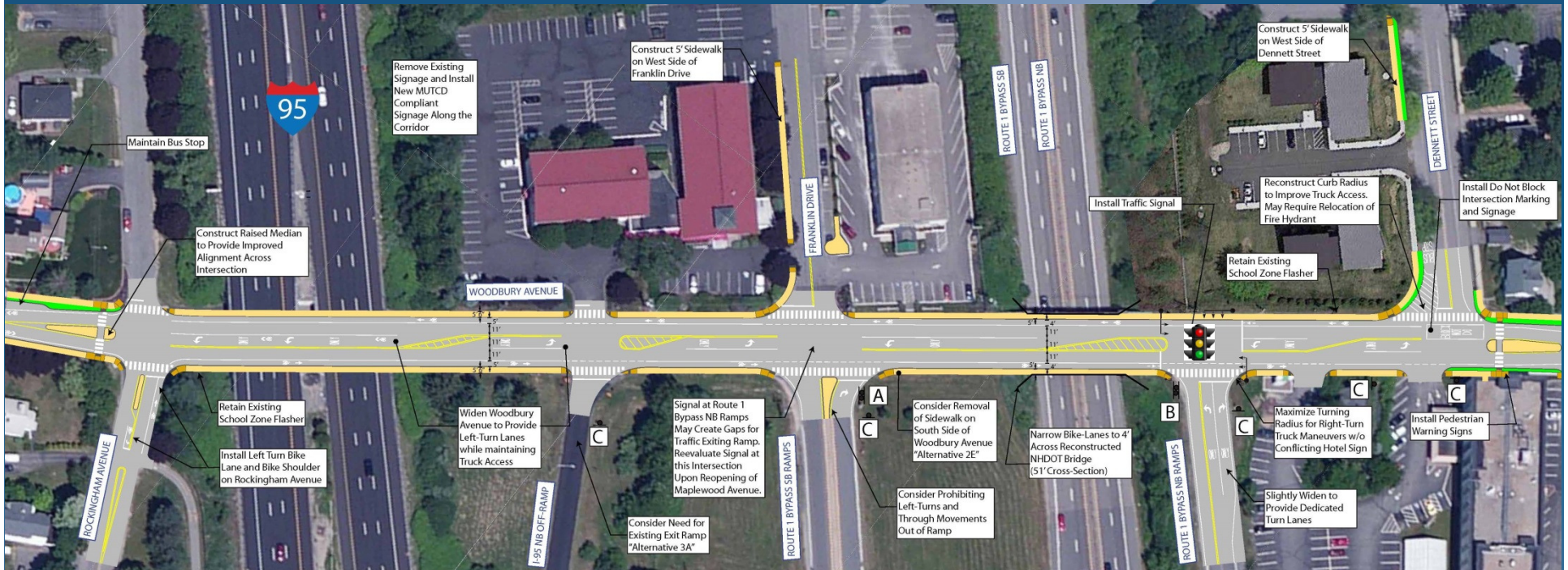
- ✓ Signal Warrant Analysis
- ✓ Turn Lane Warrant Analysis
- ✓ Capacity and Queue Analysis



Alternatives Considered



Preferred Alternative



NOTE:
 1. SEE SIGN INVENTORY IN TABLE 5 OF CORRIDOR STUDY TO SHOW LOCATIONS OF NEW SIGNS AND SIGNS TO BE RETAINED, RELOCATED, OR REMOVED.

Woodbury Avenue Traffic Study

Questions?

PLAN | PERMIT | DESIGN | CONSTRUCT

